

Bullseye level body

Item description/product images



Description

Material:

Bullseye level body stainless steel up to Ø14 mm, then aluminum.
Sight window glass.

Version:

aluminum black anodized.

Note:

Bubble levels are used as a type of zero indicator instrument for checking horizontal inclination in e.g. spirit levels, inclinometers, metrology instruments and machine constructions.

Excellent bubble contour, with internal bubble ring to eliminate planar parallaxes.

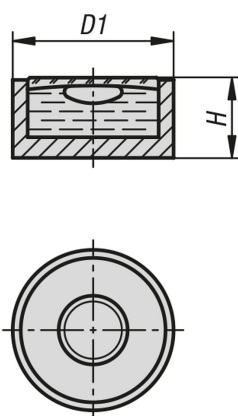
- Sensitivity in angular minutes for 2 mm bubble travel
- Clear filling

Temperature range:

-35 °C up to +55 °C.

Angular minutes	Degrees in decimals	Height difference in millimetres per metre
1'	0.0167°	0.291 mm
5'	0.0833°	1.455 mm
10'	0.1667°	2.910 mm
20'	0.3333°	5.820 mm
25'	0.4167°	7.275 mm
30'	0.5000°	8.730 mm
40'	0.6667°	11.640 mm
50'	0.8333°	14.550 mm
53'	0.8833°	15.423 mm

Drawings



Bullseye level body

Order No.	Main material	D1	H	Sensitivity
K1156.120710	stainless steel	12	6	10'
K1156.120725	stainless steel	12	6	25'
K1156.140710	aluminum	14	6,5	10'
K1156.140720	aluminum	14	6,5	20'
K1156.150710	aluminum	15	6,5	10'
K1156.150720	aluminum	15	6,8	20'
K1156.200810	aluminum	20	8,5	10'
K1156.200820	aluminum	20	8,5	20'
K1156.250910	aluminum	25	8,5	10'
K1156.250920	aluminum	25	8,5	20'

