

Straps

Item description/product images



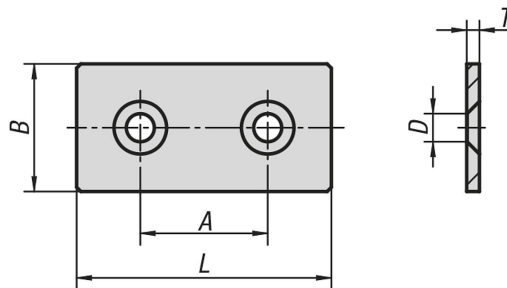
Description

Material:
Steel.

Version:
black, powder coated aluminium tone or electro zinc-plated.

Note:
Universal fastening element for a rigid connection and linkage of profiles, panel elements or lightweight shelving.

Drawings



Overview of items

Straps

Order No.	Main colour	Surface finish body	Type	Slot width	A	B	D for screw	L	T
K1042.061	black	powder-coated	I	6	30	30	M6	60	3
K1042.062	aluminium tone	powder-coated	I	6	30	30	M6	60	3
K1042.063	silver	galvanised	I	6	30	30	M6	60	3
K1042.081	black	powder-coated	B & I	8/10	40	40	M8	80	5
K1042.082	aluminium tone	powder-coated	B & I	8/10	40	40	M8	80	5
K1042.083	silver	galvanised	B & I	8/10	40	40	M8	80	5
K1042.101	black	powder-coated	B	8/10	45	45	M8	90	5
K1042.102	aluminium tone	powder-coated	B	8/10	45	45	M8	90	5
K1042.103	silver	galvanised	B	8/10	45	45	M8	90	5