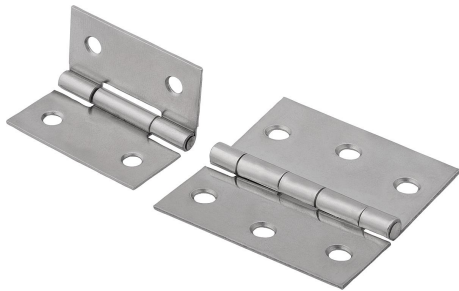


Hinges sheet steel or sheet stainless steel

Item description/product images



Description

Material:

Steel or stainless steel 1.4301.

Version:

Steel electro zinc-plated.

Stainless steel bright.

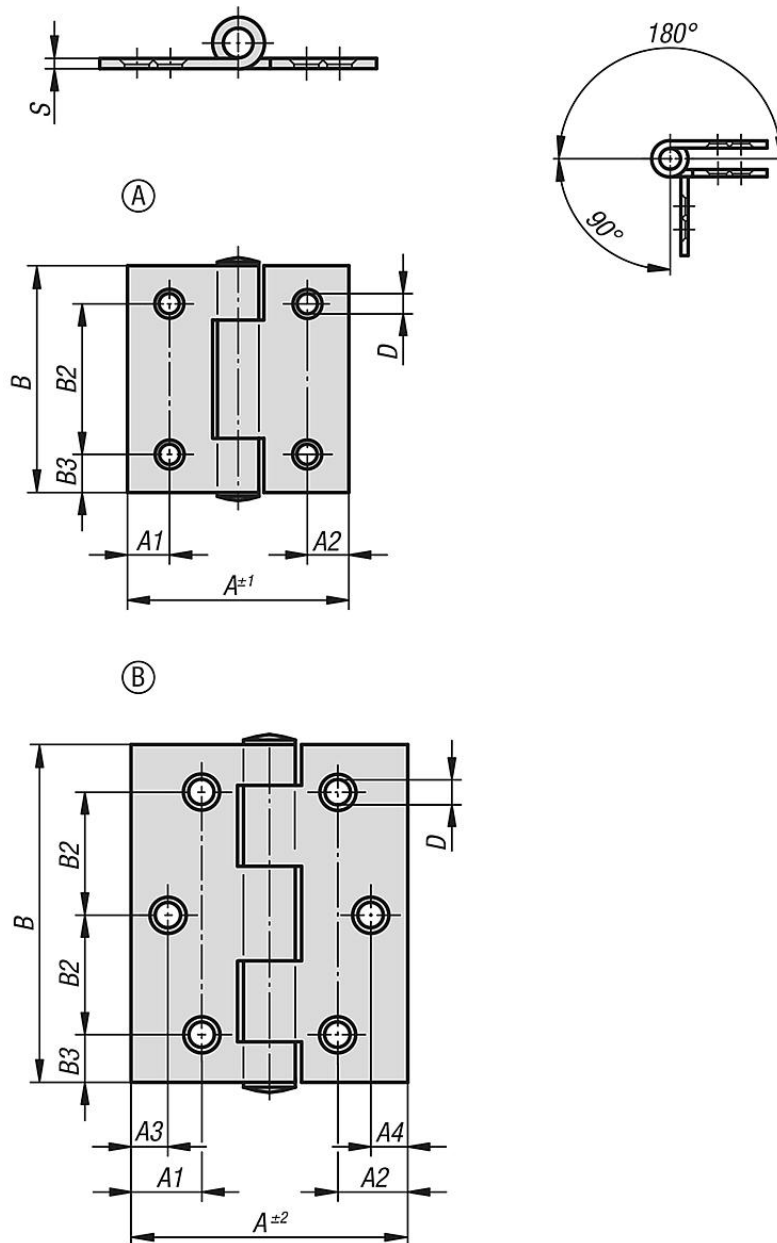
Note:

Rolled plate butt hinges.

Pins are riveted.

Screw holes countersunk.

Drawings



Hinges sheet steel or sheet stainless steel

Hinges, sheet steel or sheet stainless steel

Order No.	Material	style	A1	A2	A3	A4	A	B	B2	B3	D	S
K1082.04201212	steel	A	8,5	8,5	-	-	40	40	25	7,5	4	1
K1082.04301515	steel	B	15	15	8	8	60	60	22,5	7,5	4,5	1,5
K1082.104201212	stainless steel A2	A	8,5	8,5	-	-	40	40	25	7,5	4	1
K1082.104251414	stainless steel A2	B	11	11	8	8	50	50	18	7	4,5	1,25
K1082.104301515	stainless steel A2	B	15	15	8	8	60	60	22,5	7,5	4,5	1,5
K1082.105401515	stainless steel A2	B	25,3	25,3	12	12	80	80	30	10	5,2	1,5