

Filler necks

Item description/product images



Description

Material, version:

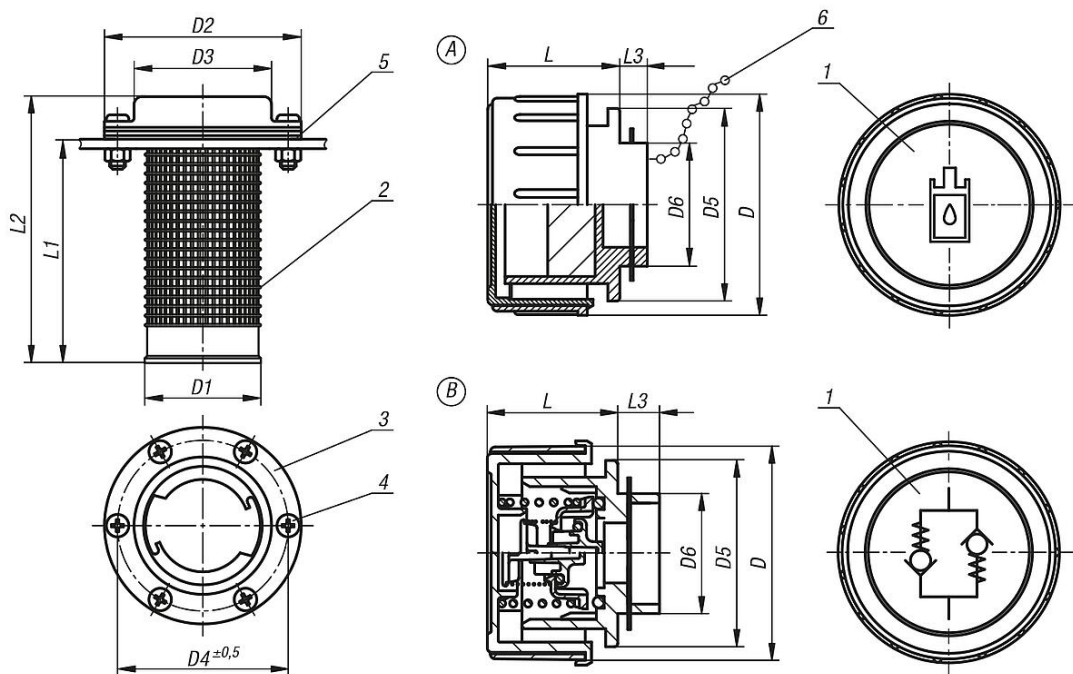
1. Sealing cap red Polyamide 66 thermoplastic.
2. Filler sieve black Polypropylene thermoplastic.
- 3 Flange electro zinc-plated steel.
4. Fastening screws electro zinc-plated steel.
- 5 Flange seal cork.
6. Chain brass.

Note:

style A: the max. pressure while venting is 50 mbar (0.73 psi) with a max. air volume of 500 l/min. The air filter prevents dirt entering.

style B: contains a plastic vent and aeration valve. The opening pressure while venting is 0.35 bar (±0.05 bar). The opening pressure while aerating is 0.05 bar. This style is suitable for applications where the airflow needs to be controlled in both directions.

Drawings



Filler necks

| Item No. | style | Version 2 | D | D1 | D2 | D3 | D4 | D5 | D6 | L | L1 | L2 | L3 |
|-----------|-------|-------------|----|----|----|----|----|----|----|----|----|-----|----|
| K1103.170 | A | with filter | 70 | 46 | 83 | 58 | 72 | 60 | 37 | 41 | 94 | 115 | 14 |

| Item No. | style | Version 2 | D | D1 | D2 | D3 | D4 | D5 | D6 | L | L1 | L2 | L3 |
|------------------|-------|------------|----|----|----|----|----|----|----|----|----|-----|----|
| K1103.270 | B | vent valve | 70 | 46 | 83 | 58 | 72 | 60 | 37 | 41 | 94 | 115 | 14 |