

Telescopic slides, steel S-form, full extension, load capacity up to 459 kg

Item description/product images



Description

Material:

Balls, rails and runners roller bearing steel.

Version:

Rail and runner electro zinc-plated.

Tracks inductive hardened.

Balls hardened.

Note for ordering:

Sold individually.

Note:

Full extension consisting of two guide rails as fixed and moving elements and an S-shaped intermediate element. This has a high area moment of inertia and high rigidity with a slim construction. This results in a high load rating with a low amount of bending in the extended state. The maximum travel is greater than the closed length of the telescopic rail.

Use grade 10.9 DIN EN ISO 10642 countersunk screws to install the rail.

The maximum traversing speed is 0.8 m/s.

Application temperature -30 °C to +110 °C.

On request:

Other lengths (steps 80 mm).

Size 28 up to max. 1490 mm.

Size 35 up to max. 1730 mm.

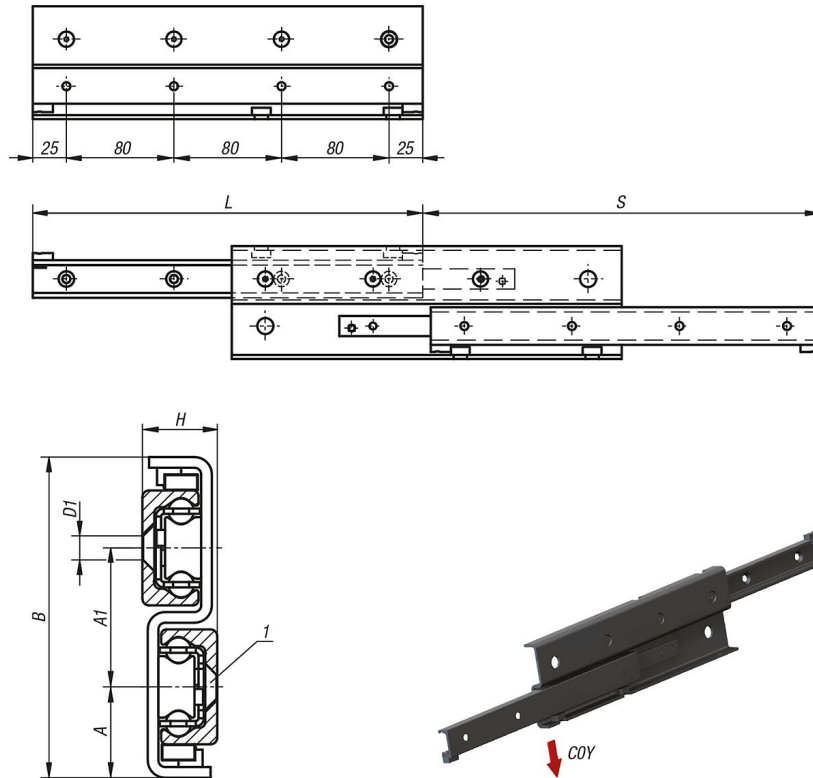
Size 43 up to max. 1970 mm.

Drawing reference:

1) for countersunk screw DIN EN ISO 10642

Telescopic slides, steel S-form, full extension, load capacity up to 459 kg

Drawings



Overview of items

Telescopic slides, steel, S-form, full extension, load capacity up to 459 kg

Order No.	Size	A	A1	B	D1	H	L	Travel S	COY N	No. of holes
K2021.280290	28	24,5	36	85	M5	17	290	296	570	4 (3 accessible)
K2021.280370	28	24,5	36	85	M5	17	370	380	769	5 (4 accessible)
K2021.280450	28	24,5	36	85	M5	17	450	464	969	6 (4 accessible)
K2021.280530	28	24,5	36	85	M5	17	530	548	1170	7 (6 accessible)
K2021.280610	28	24,5	36	85	M5	17	610	630	1376	8 (6 accessible)
K2021.350450	35	30,5	43	104	M6	22,5	450	494	1250	6 (5 accessible)
K2021.350530	35	30,5	43	104	M6	22,5	530	558	1685	7 (6 accessible)
K2021.350690	35	30,5	43	104	M6	22,5	690	734	2132	9 (7 accessible)
K2021.350850	35	30,5	43	104	M6	22,5	850	886	2801	11 (9 accessible)
K2021.430530	43	34	52	120	M8	28	530	556	2061	7 (6 accessible)
K2021.430610	43	34	52	120	M8	28	610	626	2603	8 (6 accessible)
K2021.430690	43	34	52	120	M8	28	690	726	2775	9 (7 accessible)
K2021.430770	43	34	52	120	M8	28	770	796	3319	10 (7 accessible)
K2021.430850	43	34	52	120	M8	28	850	866	3873	11 (9 accessible)
K2021.431010	43	34	52	120	M8	34	1010	1036	4590	13 (10 accessible)
K2021.431490	43	34	52	120	M8	34	1490	1516	3713	19 (15 accessible)